

29 AUG
-
22 SEPT
2022

TRANSFORMATIVE SAFEGUARDING

LIVE ONLINE COURSE

UNITED
EDGE

Explore the fundamentals of safeguarding and how to implement it in your organisation through a lens rooted in justice

THE REASON

In recent years we've seen scandal, fear, reputational risk, and compliance act as key drivers for the development and review of safeguarding policies and practices. Legal ramifications and compliance issues have forced many organizations to act at pace. This process can result in a safeguarding culture that lacks meaning and inappropriately centres donor requirements rather than the people we are here to serve. Although many organizations have moved their safeguarding work forward, there is still a long way to go to address systemic failures across civil society and beyond.

To truly transform our safeguarding approach, we need to take a radical and critical look at our organizations and ourselves from the inside out and scrutinise the roots of injustice. Our safeguarding work must include acting for a more just reality so that we get to the root causes of abuse. Protection and safeguarding must become deeply embedded in the values and the culture that an organization lives and breathes. We will explore these themes and many others during the course and give you invaluable knowledge, confidence and tools to take back to your colleagues, partners and the communities you serve.

This course will look at international safeguarding standards and the criteria of relevant regulatory bodies, how they connect with your everyday reality and how the Justice Based Approach - a lens that challenges us to put justice at the forefront of our work and lives - can fundamentally reshape these standards and practices.

We will look at safeguarding as it relates to children and people in vulnerable situations, staff and volunteers, your wider organization (culture and practice) and you.

If you want to refresh your knowledge and gain a comprehensive understanding of safeguarding through a radical lens, then join our dynamic live online course in 2022.



This is the very first training where we truly felt a real transformational impact on our internal growth. It has indeed given us a new way of thinking, of viewing the world, an inspiring model to follow, and the most meaningful and effective way to work and live our lives to the full.

Mai Siriphongphanh, Lao Disabled People's Association, Laos

THE COURSE

This comprehensive course offers you the unique opportunity to explore the fundamentals of safeguarding and use a radical lens to move your work beyond compliance towards justice and greater impact.

During the course, you will explore & deepen your knowledge of:



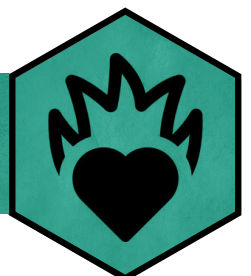
- What safeguarding is, where it originated and why it is important
- How to Identify, respond to and report safeguarding concerns
- Why standard safeguarding approaches fall short
- How the Justice Based Approach radically alters practice throughout the safeguarding framework (prevent, respond, report, learn)
- How to implement justice based safeguarding within your organization
- How to become more aware of your own conduct, biases and ability to do harm and how to take care of yourself

By the end of the course you will have:



- Initiated a Justice Based Safeguarding Audit of your organization
- Developed an action plan for your organization using bespoke tools
- Learned from experts through live interactive sessions, 1-2-1s, and Q&As
- Analyzed a range of case studies and applied your learning in small groups

Through this course you will feel:



- Equipped with practical tools and knowledge to use in life and work
- Connected to a supportive network of safeguarding practitioners
- Motivated and energized to implement new ways of working and shift culture in your organization
- Grounded in the knowledge that effective safeguarding comes from love and compassion, not fear and blame
- Confident in your ability to effectively identify, respond to and report and safeguarding concerns and incidents

JUSTICE BASED APPROACH

The Justice Based Approach is a lens that refocuses our actions and decisions on models that dismantle unjust systems and hold power to account in order to shift the planet towards social and environmental justice.

If we really want justice in our projects and actions, we need to consider all five pillars of the Justice Based Approach thoroughly.



RADICAL SYSTEMS

We take a systems approach to solving problems and work to make radical systems commonplace.



LIVING DEMOCRACY

We empower individuals and groups to participate in the decisions that affect them, provide tools to increase access to good information, and support the right structures to make those decisions.



EVERYDAY ACTIVISM

We believe that change makers need to build their own resilience and awareness to help others become more active. We share lessons from across the spectrum of social change movements and support others to build their capacity to learn and take action.



ALTERNATIVE MODELS

We help shift the paradigms of change makers to recognize failing approaches, pilot power-shifting projects, and cultivate alternative models for lasting change.



BRAVE ACCOUNTABILITY

We strive for global justice and an end to impunity and believe in the power of individuals, groups and movements to shift the power of privilege and unite to hold power to account.



Download our free Justice Toolkit: www.uniteedge.net/justice-toolkit



THE ESSENTIALS

Course length: 4 weeks

Total time commitment: 25.5 hours

Week 1. Live session: 1.5 hours

Weeks 2 - 4. Live sessions: 6 hours per week with sessions every Tues & Thur

Week 2 - 4. Self-guided: 2 hours per week

Price: \$595 USD per person

\$535 USD per person for groups of 10+

Language: English

Delivery methods:

- Live participatory online sessions
- Interactive learning tools
- Facilitator Q&As
- Online forum
- Lifetime access to a resource bank inc. audit tool
- Small team discussions
- 1-2-1 with Facilitators
- Self-guided learning & reflection

Next course dates: 29 Aug-22 Sept 2022

Enrollment deadline: 25 Aug 2022 while spaces are available

More information: www.unitededge.net/safeguarding



It was a great period of learning and unlearning both on a personal and professional level.

Rachael Ampaire Mishambi, The Hague Institute for Innovation of Law, Uganda

THE SCHEDULE

The course starts the week of 29 August and ends on 22 September 2022. Live sessions take place on Tuesdays and Thursdays.

All sessions start during the morning for Africa and Europe, late morning for the Middle East, mid-day for South Asia, the afternoon for Southeast Asia, and the early evening for the Pacific and Australia.

Each week includes six hours of live sessions, with additional time for self-paced learning and a facilitator Q&A session.



ORIENTATION

Week of 29 August. You will meet our team of facilitators for an introduction to the course, meet other participants and familiarize yourself with the online tools and platform ahead of the course starting. You only need to attend one 1.5 hour session during THIS week. We will have several dates and times for you to choose from.



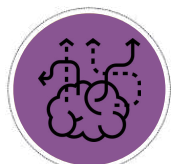
WEEK 1

Week of 5 September. We will introduce you to the Justice Based Approach and explore the fundamental principles of safeguarding and how they relate to one another. You will start to reflect on your own projects and organizations.



WEEK 2

Week of 12 September. We will be taking our learning further by exploring how transformative safeguarding can be implemented, and you will contextualize these lessons in your own work.



WEEK 3

Week of 19 September. In our final sessions, we will consider how you can practically take your learning on safeguarding and justice forward in your work and in life.

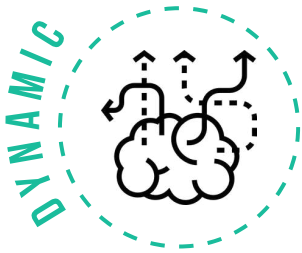
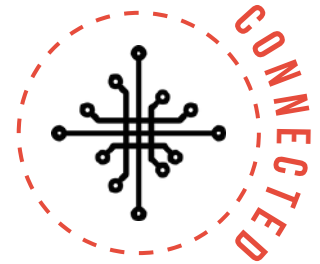


WEEKLY

Each week we will provide you with resources and reflection points that you can explore and work through in your own time, often focusing on contextualising your learning and beginning to use tools such as the Justice Based Safeguarding Audit. Our course facilitators will run a Q&A each week, which are always very popular with our course participants!

THE APPROACH

Our style of online delivery creates genuine human connection, facilitates deeply reflective and thoughtful discussions, and leads to real impact and effectiveness.



The course uses mixed methodologies, including participatory live sessions, interactive online tools, movement, games, small group discussions, an online forum, and self-led learning and reflection. Our facilitators run Q&A sessions, and you have the opportunity to book one-to-one calls with them throughout the course.

Our courses attract participants from around the world, which creates a unique learning and sharing environment. Reflecting on safeguarding from a local and global level will vastly expand your network and generate rich and valuable discussions.



We take great care to create a safe and welcoming space for all course participants. We are committed to making reasonable adjustments to ensure that anyone with an additional need is able to participate. Additional needs and access requirements can refer to physical, mental, emotional, or other conditions. These might include emotional triggers and 'invisible' diseases, conditions, impairments, or disabilities. Our Inclusion Lead will discuss this with you before the course and ensure that you are comfortable and you feel supported throughout.



MEET YOUR FACILITATORS

This course is designed and facilitated by United Edge's Co-Founder, Daniel Bevan, and United Edge Associate, Laura Griffiths. We are delighted to bring them together to share their collective experience from the safeguarding, humanitarian, development and human rights sectors around the world.



DANIEL BEVAN

Daniel is the Co-Founder of United Edge, and one of the original architects of the Justice Based Approach.

He has specialized in participatory approaches, client-led programming, capacity building, and monitoring and evaluation and has worked with partners as varied as governments, child and youth groups, the UN, academic institutions, activists, INGOs and affected communities.

He has worked for many years in child and youth rights, education and child protection and now focuses his energy on innovative approaches to systemic change and decolonizing aid.



LAURA GRIFFITHS

Laura's work focuses on building participatory and robust frameworks that safeguard the people who need it most. She has more than 16 years of experience in safeguarding, child rights, conflict resolution and organizational development.

For the last six years, Laura has largely focused her work on leading the programmes and organizational development for Safe Passage International, an award winning strategic legal charity she co-founded that works to support children on the move.

Laura is a University of Peace alumnus, and a qualified community mediator.

Daniel is an energy powerhouse of facilitation, storytelling, learning and design. Everything he does is infused with his signature blend of emotional intelligence, integrity, humanity and passion.

**Laura Gelder-Robertson, Director,
Glow Innovation**

Laura quickly grasps the opportunities, challenges and dynamics of a team, room or project and her advice combines clear-headed strategic instinct with a laser-sharp ability to focus on the practicalities and reality of making change happen.

**Iona Lawrence, Founding Director of The
Jo Cox Foundation**

THE PARTICIPANTS

We know that teams with comprehensive safeguarding knowledge build stronger, safer organizations and programmes. This course has been developed for *all* staff, volunteers and trustees from a range of sectors. It will be particularly relevant to you if:

- ▶ You work for a humanitarian, community development or social change organization
- ▶ You work directly with children and people in vulnerable situations or you manage staff or volunteers who do, including in education, social work, local government and religious settings
- ▶ You have a safeguarding-focused role, including Safeguarding Leads
- ▶ You are in a Senior Leadership Team or on a Board of Trustees
- ▶ You work in a Human Resources or People Team
- ▶ You fundraise for or design programmes
- ▶ You are a donor agency that supports organizations working with children and people in vulnerable situations
- ▶ You work in communications for programmes that involve children and people in vulnerable situations

A highlight of our courses for many participants is the opportunity to connect with and learn from people from across the world. Our 2021 courses had participants from 57 countries!

The course is relevant to a wide range of sectors and organisations, including humanitarian and development agencies, charities, public sector agencies, UN agencies, community groups and local partners.



TESTIMONIALS

We have received many stories from course participants about the enormous impact our courses have had on their work and lives. Here are just a few of them.



It is the best training I have ever had! It helped me think differently, opened my perspective, and [taught] a new way of doing development work!

Participant from World Vision, Cambodia



A must-attend if one wants to be more effective, efficient, just, humane and simply better and smarter.

Participant from Humanitarian Leadership Academy, Philippines



[The course] was really interactive and delivered with so much energy and passion.

Participant from Restless Development, UK



It will open your mind to ideas you never realized you could have.

Participant from WWF, Malaysia



It's a different frame of thinking about perennial issues that puts people at the centre of any action.

Participant from UN OCHA Myanmar



[It] is completely different than [any other] contemporary training, and it is a must-do training.

Participant from UNFPA, Bangladesh



The training was the best motivation - and energy-boost - I had in my professional career.

Participant from GIZ, Cambodia



It is awesome and vision changing for professionals who want to think and work differently.

Participant from Oxfam, India



I would strongly recommend this training, not just to those starting out their careers in development/social work, but perhaps even more so for those who have been in the line for so long that they stop asking questions and challenging themselves.

Participant from WWF, Malaysia

Read more on



THE PRICE

STANDARD RATE
PER PERSON

\$595
USD

\$535
USD

GROUP RATE
PER PERSON

The course fee includes:

- 18 hours of *live* online facilitated learning led by highly experienced facilitators with decades of combined experience in this field
- Transformative Safeguarding Resource Pack including our Justice Based Safeguarding Audit Tool and implementation template
- One-to-one discussion with course facilitators
- Access to a network of global safeguarding professionals
- An orientation session to build confidence and skills in remote learning approaches
- Q&A session with facilitators
- Regular small-team discussions
- Self-paced learning, reflection, and action points based on each week's content
- Exclusive access to the Transformative Safeguarding forum where participants can share and learn from one another
- Post-course event to reconnect with your group and reflect on your work
- Ongoing access to our community of social change makers, including frequent resource sharing and regular learning events for ongoing professional development
- A certificate to verify your course completion
- Exclusive opportunity to join the Advanced Safeguarding Course (Nov 2022)

**Financial
assistance
available**



THE PRICE

GROUP RATE: \$535 USD per person

Receive 10% off when you book 10 or more places on a course.

Group attendance is a wonderful way to learn and develop together as a team and organization.

Groups can be from multiple organizations if they book the course together. Donors and organizations have used this as an opportunity to support partners and whole teams to attend together.



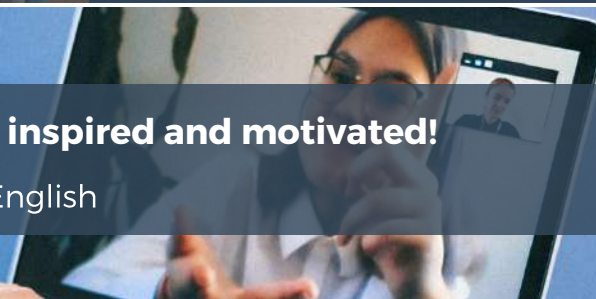
FINANCIAL ASSISTANCE

We proudly offer financial assistance to help cover part of the course fee for people who may otherwise find it difficult to fund such a course. Since 2017, we have provided almost \$100,000 worth of financial assistance to course participants, ensuring that grassroots and local organizations with limited funds but big aspirations can develop their work for greater impact and positive social change.

We prioritize support for those from the majority world, women, black and indigenous people, those from ethnic minorities, LGBTQIA+ people, young people, disabled people, refugees, and grassroots activists. To apply for financial assistance, please contact us.

I always finished the sessions inspired and motivated!

Fiona Locke | Founder | Birdsong English



THE IMPACT



UNITED EDGE HAS
TRAINED OVER 1,500
PEOPLE FROM...



COUNTRIES



WOULD
RECOMMEND OUR
COURSES



ARE SATISFIED
WITH CONTENT &
FACILITATION



SEE THINGS IN A
NEW WAY AFTER
OUR COURSES



RATED OUR COURES
EXCELLENT VALUE
FOR MONEY



ALUMNI IN OUR GROWING ONLINE COMMUNITY, FORMING A
LEARNING GROUP FOR ONGOING PROFESSIONAL AND
PERSONAL DEVELOPMENT



ACTIVISTS AT HEART

HUMANITARIANS BY TRADE

SOCIAL ENTREPRENEURS BY DESIGN

United Edge is a social enterprise working with change makers to transform our broken systems with alternative models for global justice.

We are working towards a just world where people and the planet are prioritized over profit and short-term gains.

Everything we do is aimed at creating a more just world.



ACTIVISTS AT HEART

We are everyday people who believe that each of us has a responsibility -- and the ability -- to make a difference. We partner with change makers around the world who are committed to global justice through changing systems, shifting power and better development. We add our voices to this vibrant movement because we passionately believe in the power of individuals and groups uniting to make change happen.

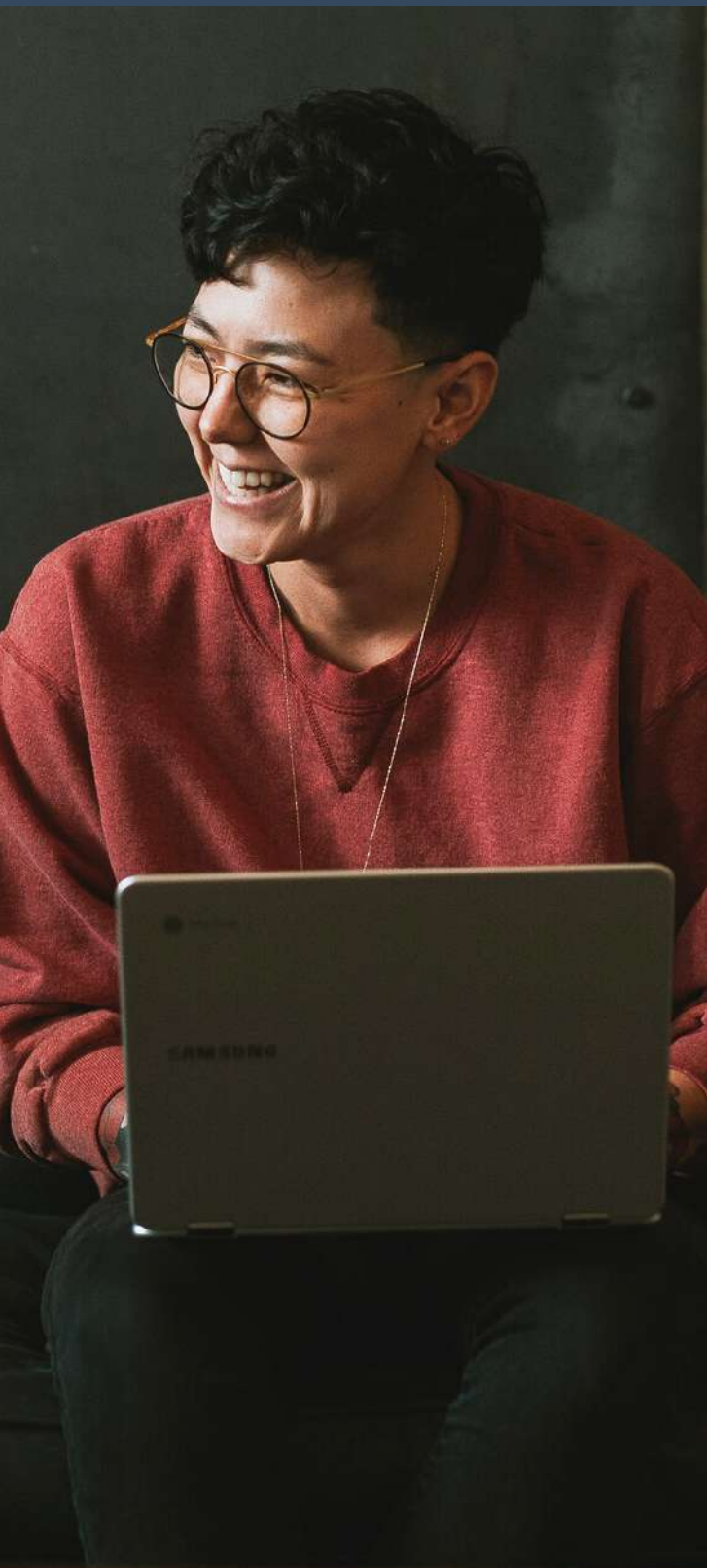
HUMANITARIANS BY TRADE

We are experienced professionals with skills, expertise and insight to share. We have worked on human rights, community development and humanitarian projects for over 15 years across Africa, Asia, Europe, North America and the Middle East. Our time with communities and youth groups, local civil society and CBOs, national and international NGOs, large networks and the United Nations has helped us understand the challenges that change makers face.

ENTREPRENEURS BY DESIGN

We are a social enterprise committed to piloting power-shifting projects and providing services to change makers everywhere. Instead of imposing our solutions, we want our services to be subject to demand. Power and privilege define the way social change is usually funded and put into practice. As a social enterprise, we fund all our work by our own means. Our independence means we can focus on delivery without compromising quality or ethics.

BOOK YOUR PLACE



Places on the course are extremely limited, and our courses get booked up quickly. Book early to avoid missing out.

Click the link above or visit www.unitededge.net/safeguarding



Please read the terms and conditions, including the cancellation policy before booking.

If you have any further questions visit our FAQ page: www.unitededge.net/faq

BRINGING THE COURSE TO YOU

Please get in touch if you would like to discuss hosting an exclusive in-house course at your organization.

We also offer other courses, coaching and mentoring services, as well as consultancies for like-minded organizations. Find out more on our website.

GOT ANY QUESTIONS?

We'd love to hear from you!

info@unitededge.net

www.unitededge.net/safeguarding



Connect with us:

